

Alarm 40: Clamp bar fault

This alarm is only monitored while the clamp bar is being commanded to close. If the Clamp bar closed limit switch is not seen within time, this alarm will occur.

This alarm is controlled by CLAMP MOVE on the delays screen.

MENU\HMI SYSTEM\DELAYS\VACUUM

MENU\HMI SYSTEM\DELAYS\KNIFE DELAYS : CLAMP BAR ALARM

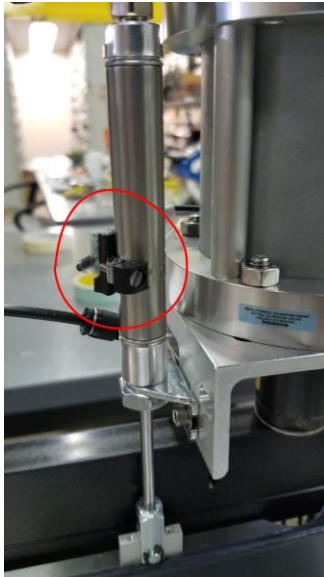
Value range 0 – 9.999. The default is 6.000 seconds

This alarm is disabled when all alarms are disabled.

Cause

1. This alarm is triggered if X17 is not turned on within the time set during actuation. It is also turned on if X17 is on while not being commanded to close.

Use Manual controls to close the clamp bar and set the limit switch to on at that location.(MENU\HMI SYSTEM\MANUAL CONTROLS)



Disconnect all electrical and compressed air sources from the Heat Sealer before doing any maintenance work. Only qualified technicians should perform this work. Improper installation of the components may result in serious personal injury and damage to equipment. Call PackworldUSA Ltd if further information is needed.