

Alarm 99: Pressure mismatch fault

The pressure mismatch is an alarm thrown by the seal PSI monitor. This monitor is checking that the seal pressure at the cylinder is what it should be. It is mainly used to detect cylinder blowby or severe leaks which would affect seal pressure.

This alarm is controlled by TIMEOUT on the SEAL PSI MONITOR screen.
MENU\HMI SYSTEM\SEAL PSI MONITOR
Value range 0.002 – 9.999. The default is 0.300

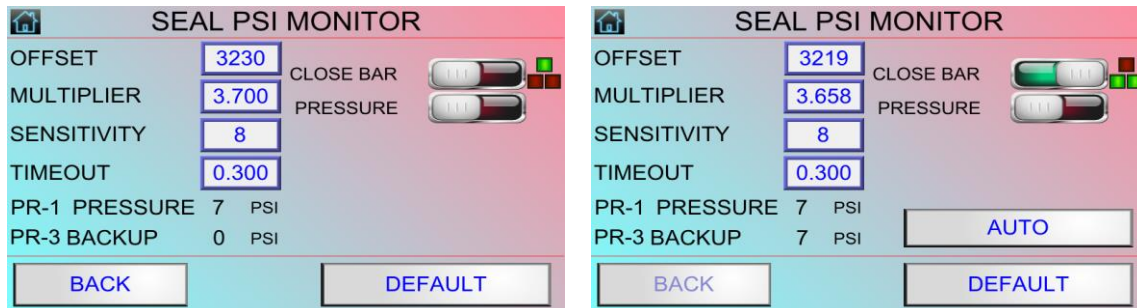
This alarm is disabled when all alarms are disabled.

Cause

1. Settings are not set properly.

Adjust the settings so PR-1 equals PR-3 in both high and low pressure.
On software versions 6.50 and newer, there is a function called AUTO.

- a. Close the jaw bar.



- b. The auto button will become visible. Press it.
- c. The machine will go through its calibration.
- d. It should be corrected to 1psi. If not, run it again.
- e. If it fails after 3 tries press the default button and try again.

Good settings as of this publication.

Offset = 3219

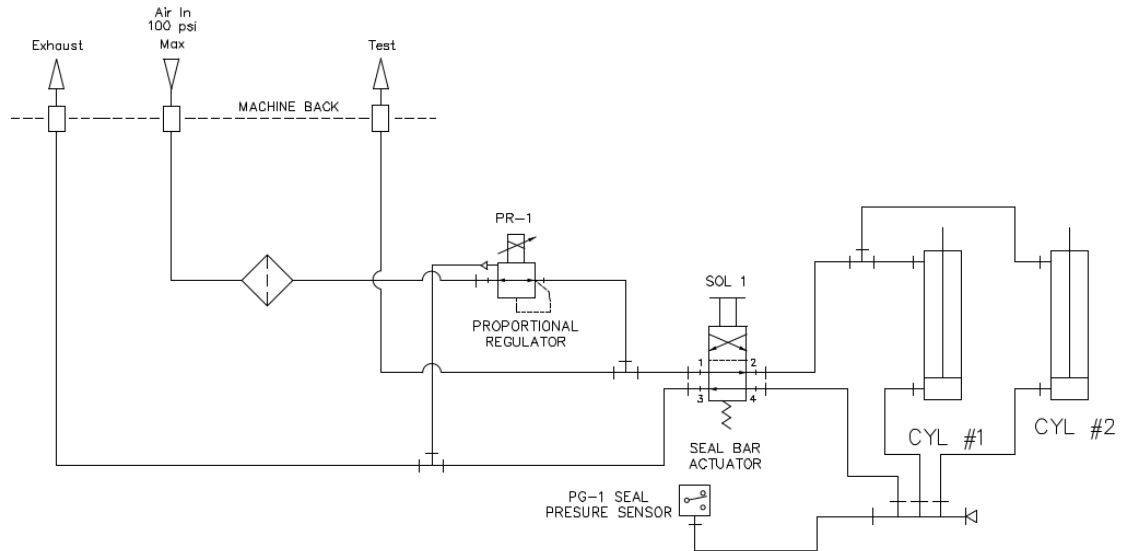
Multiplier = 3.658

Sensitivity = 8

Timeout = 0.300 (This should not be lower)

2. Cylinder blowing air past the piston. This is usually accompanied by air coming out the exhaust. Either replace both cylinders or determine which cylinder is bad and replace that cylinder. We recommend changing both cylinders.

3. Major internal leak in the cylinder circuit.
Locate the leak and repair it.



4. Backup pressure sensor failure.
If PR-3 is constantly 6PSI, then it is either not connected or completely failed. Repair\replace sensor.



Disconnect all electrical and compressed air sources from the Heat Sealer before doing any maintenance work. Only qualified technicians should perform this work. Improper installation of the components may result in serious personal injury and damage to equipment. Call PackworldUSA Ltd if further information is needed.